



# Andela

## AGB-2HD

# AGB-2HD System

**20 TPH Capacity**

**Efficient Size Reduction**

**Flexible Impact Hammers**

**Product Destruction**

**Glass Cullet Processing**

**Commingled Container  
Processing & Separation**

**Model:**

**AGB-2HD System**

*Reduces waste*

*Provides a cost effective remedy  
for environmentally conscious  
communities*

**ANDELA PRODUCTS**

493 State Route 28  
Richfield Springs, NY 13439

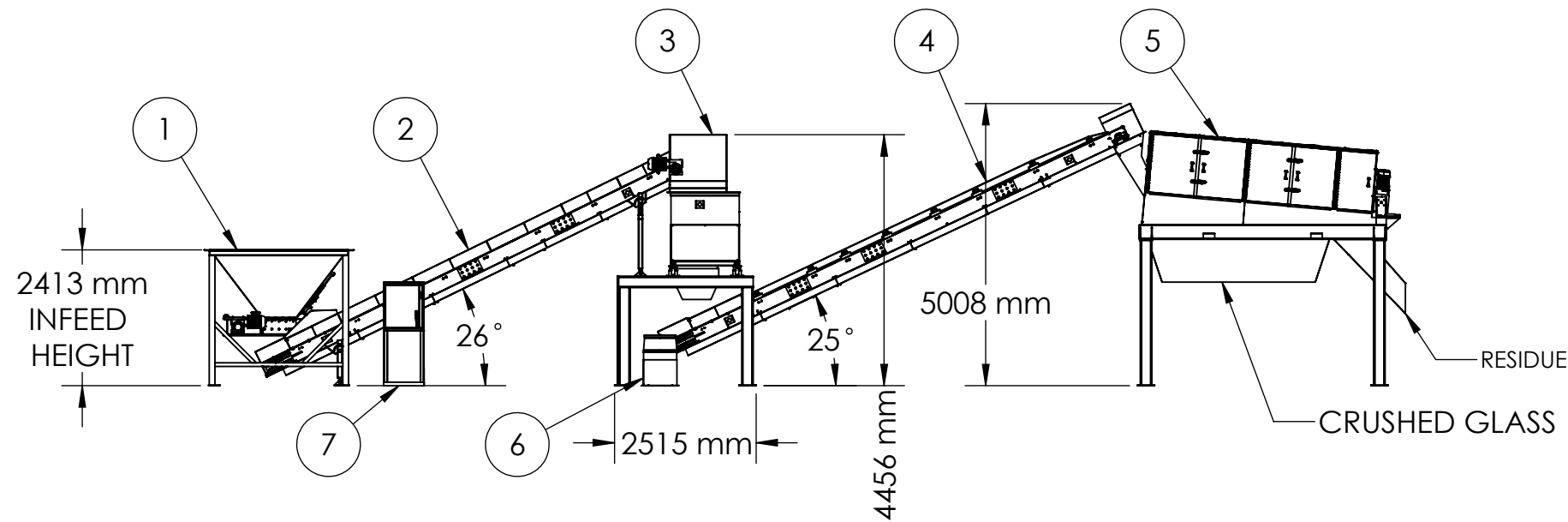
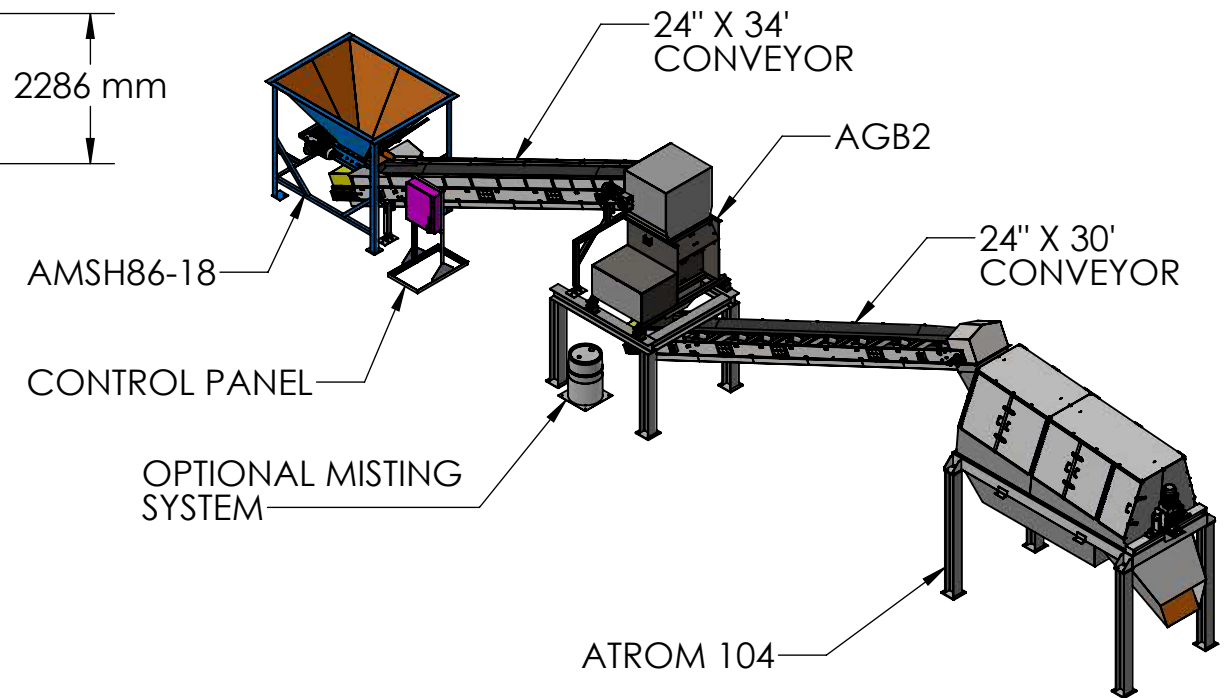
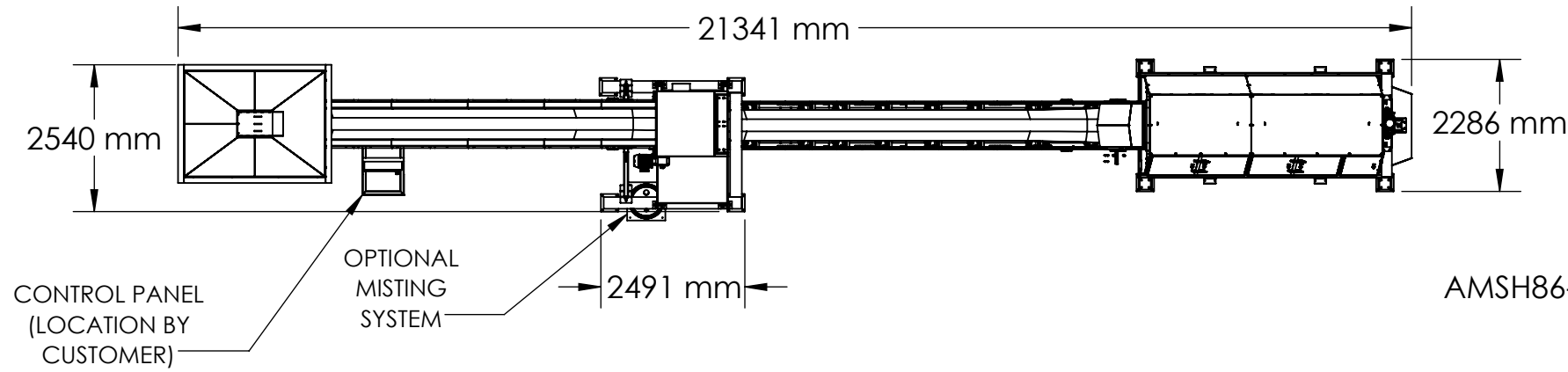
Phone: (315) 858-0055  
www.andelaproducts.com  
info@andelaproducts.com



- The Andela Crushers are used for glass cullet production or to efficiently reduce and separate mixed glass from a commingled mix of glass, plastic and aluminum.
- The flexible impact hammers will liberate and crush glass, ceramics and other breakable materials.
- With abrasion resistant materials to endure the rigors of glass processing.
- Also available as a single unit  
**(See Equipment page)**

- **Simple to operate and maintain**
- **Low power requirements for significant size reduction**
- **Will process a mix of glass and other materials selective size reduction**
- **Big machine features with a small machine price**
- **Heavy duty construction**

**THIS DRAWING IS INTENDED FOR PROPOSAL PURPOSES  
ACTUAL DESIGNS, DIMENSIONS AND DETAILS MAY  
VARY AFTER DETAILING AND FINALIZATION**



**NOTE:  
1-HOODS, HOPPERS AND DISCHARGE CHUTES  
MADE TO CUSTOMER SPECIFICATIONS  
2-ALL DIMENSIONS ARE REFERENCE DIMENSIONS**

NO.	ITEM	DESCIPTION	H.P.
1	AMSH 86-18	SURGE HOPPER	3 HP
2	24In x 34Ft CONVEYOR	24 INCH TROUGHING CONVEYOR	3 HP
3	AGB-2 on Stand	GLASS BREAKER	20 HP
4	24In x 30Ft CONVEYOR	24 INCH TROUGHING CONVEYOR	3 HP
5	ATROM 104	SCREEN TROMMEL	5 HP
6	OPTIONAL MISTING SYSTEM		1/12 HP
7	CONTROL PANEL	SYSTEM ELECTRICAL CONTROLS	N/A



493 State Route 28  
Richfield Springs, NY 13439  
Tel: 315-858-0055  
andelaproducts.com

DRAWN BY:  
MB  
MODELED BY:  
RJY  
DATE:  
6/7/2023  
CHECKED BY:  
SCALE:  
1:256

AGB2-104 SYSTEM

ANDELA SALES DRAWINGS

REVISION	DATE	FILE NO

ALL EQUIPMENT PAINTED RAL-5015 SKY BLUE, ALL GUARDS AND RAILINGS PAINTED RAL-1023 TRAFFIC YELLOW, AND ALL PLATFORMS PAINTED RAL-9017 TRAFFIC BLACK, UNLESS OTHERWISE NOTED.

AGB2-ATROM104

SHEET 1 OF 1



# Andela

## AGB-2HD

### AGB-2HD Glass Crusher

**Efficient Size Reduction**

**Flexible Impact Hammers**

**Product Destruction**

**Glass Cullet Processing**

**Commingled Container Processing & Separation**

**Models:**

AGB-2: 20 TPH

*Reduces waste  
Provides a cost effective remedy  
for environmentally conscious  
communities*

**ANDELA PRODUCTS**

493 State Route 28  
Richfield Springs, NY 13439

Phone: (315) 858-0055  
www.andelaproducts.com  
info@andelaproducts.com



- The Andela AGB-2HD glass crusher is used for glass cullet production or to efficiently reduce and separate mixed glass from a commingled mix of glass, plastic and aluminum.
- Simple to operate and maintain.
- Will process a mix of glass and other materials.
- Big machine features for a small machine price.
- Also available as a system.

- Simple to operate and maintain
- Low power requirements for significant size reduction
- Will process a mix of glass and other materials — selective size reduction
- Big machine features with a small machine price
- Heavy duty construction



www.andelaproducts.com

---

## **ANDELA BREAKER MODEL AGB-2**

The Andela Breaker is ideally suited to many applications because of its durability, flexibility, and design. This equipment is unique in its ability to successfully process a broad range of items using a technology that selectively reduces certain material while leaving others whole.

### **MACHINE SPECIFICATIONS**

#### Dimensions

Overall Depth .....	51”
Overall Width .....	92”
Overall Height .....	Variable
Hopper Input Opening .....	36” x 44”
Frame Construction .....	Welded Steel with ..... ½” to 1” Thick Abrasion Resistant Steel Liner Plates
Heavy Duty Frame with Vibration Isolation .....	(4) Mechanical Spring Isolators

#### Drive Componentry

Motor Size .....	(1) 20 hp
Solid Steel Shaft Diameter .....	3”
Number of Hammers .....	24
Hammer Type .....	Heavy Duty Flailing Arm of Through Hardened Steel
Bearing Size .....	3” Heavy Duty

#### Safety and Maintenance Features

Protective Guards .....	Cover Input Drive Unit and Bearings
Access Door .....	Removable Panels for Hammer and Liner Maintenance

#### Electrical

Motor Voltage .....	230/460VAC, 60 HZ, 3 Phase
---------------------	----------------------------

The manufacturer reserves the right to change designs  
and specifications without notice.



# Andela

## Hoppers

### Surge Hopper

**Evenly Distributes  
Material**

**Essential for Bulk  
Loading**

**Models:**

AMSH86-18

AMSH86-24

*Environmentally friendly*

*Reduces waste*

*Provides cost effective remedy*

*for environmentally conscious  
communities*

**ANDELA PRODUCTS**

493 State Route 28  
Richfield Springs, NY 13439

Phone: (315) 858-0055

[www.andelaproducts.com](http://www.andelaproducts.com)  
[info@andelaproducts.com](mailto:info@andelaproducts.com)



- The Andela Metering Surge Hopper is designed to accept bulk loading of glass or other materials
- Holds 4 cubic yards, or up to 6 cubic yards with optional flared extensions (shown in picture)
- Reciprocating plate feeder meters the flow rate of material into the system
- Adjustable slide gate regulates whole, or mixed broken glass to desired throughput

- Simple to Operate & Maintain
- Easy Installation
- Reasonably Priced
- Heavy Duty Construction
- 18" or 24" wide Discharge
- Abrasion Resistant Materials on All Wear Surfaces

**ANDELA METERING SURGE HOPPER**  
**MODEL AMSH86-18**

**MACHINE SPECIFICATIONS**

Dimensions

Capacity ..... 4 cubic yds.  
Overall Length ..... 105"  
Overall Width ..... 81"  
Overall Height ..... 95"  
Discharge Opening ..... 18" wide x Adjustable Height  
Discharge Height ..... 40"

Drive Componentry

Motor Size ..... (1) 3 hp  
Direct Drive System ..... Totally Enclosed Gear Reducer  
..... Reciprocating Plate with Eccentric Drive

Electrical

Motor Voltage ..... 230/460 VAC, 60 HZ, 3 Phase  
Controls ..... Push Button Start/Stop

Selected surfaces lined with abrasion resistant steel for long wear and durability.  
Hopper completely lined with abrasion resistant steel for long wear and durability.

The manufacturer reserves the right to change designs  
and specifications without notice.



# Andela

## Trommel

### Trommel Screener

30" & 48" diameters

6ft–15ft long

1.5 HP–7.5 HP

3 material separations

1 or 2 aggregate sizes

1 oversize / residual

#### Various Applications

Glass

Compost

Plastics

Rubber

Gravel

Mixed Material

#### ANDELA PRODUCTS

493 State Route 28  
Richfield Springs, NY 13439

Phone: (315) 858-0055

[www.andelaproducts.com](http://www.andelaproducts.com)  
[info@andelaproducts.com](mailto:info@andelaproducts.com)



The Andela Trommel Screen Separator is designed to separate and size aggregate using woven wire mesh or perforated plate.

Our trommels feature direct drive systems flexibly mounted with totally enclosed gear reducers for long lasting performance.

Comes equipped with rotating brushes for cleaning the screens.

Customizable chutes build to customer specification.

- Simple to operate and maintain
- Easy Installation
- Reasonably priced
- Durable
- Totally enclosed with easy access doors
- Single frame construction

**ANDELA TROMMEL SEPARATOR**  
**MODEL ATROM-104**

**MACHINE SPECIFICATIONS**

Screen Sizes

Screen Size .....2” screen opening or to specification  
.....48” OD x 10’ long

Categories of Separation

2” minus – Unders (or to specification)  
2” plus – Overs

Features

Overall Length .....Approx. 16 ft  
Overall Width .....Approx. 6 ft  
Enclosure .....Complete Sheet Metal Enclosure  
.....Hinged Service Door for Screen & Brushes  
Screen Barrel Diameter and Length ..... 48” x 11ft  
Screen Type .....Stainless Steel Woven Wire  
Rotating Brushes .....(2) - 7” diameter  
Maintenance Features .....Central lubrication Block, External Mount

Drive Componentry

Motor Size .....(1) 5 hp  
Direct Drive System ..... Totally Enclosed Gear Reducer  
.....Flexible Mount

Electrical

Motor Voltage ..... 230/460 VAC, 60 HZ, 3 Phase

The manufacturer reserves the right to change designs  
and specifications without notice.





# Andela

## Conveyors

Belt Width Options:  
18", 24", 30" & 36"

Variable Lengths, Bed  
Types, & Pans Available.

Stainless Steel Sections  
for Crossbelt Magnets

**Conveyor Types:**  
Slider Bed  
Troughing Roll

**Belt Tread Type:**  
Cleated belt  
Smooth belt  
Chevron belt



### ANDELA PRODUCTS

493 State Route 28  
Richfield Springs, NY 13439

Phone: (315) 858-0055

[www.andelaproducts.com](http://www.andelaproducts.com)  
[info@andelaproducts.com](mailto:info@andelaproducts.com)

- Andela Conveyors are available in various sizes and configurations to fit any application
- Remote grease fittings and lines extend to base of conveyor for ease of maintenance

- **Increases Production**
- **Less Handling of Material**
- **Heavy Duty Construction**

**ANDELA SYSTEM CONVEYORS**  
**MACHINE SPECIFICATIONS**

**Heavy Duty – Troughing**

<b>Overall Length/Width</b>	According to Quotation
<b>Drive System</b>	3-phase motor and gear reducer, direct drive
<b>Conveyor Body</b>	10” x 3/16” formed steel channels
<b>Carry Surface:</b>	Troughing Roller
<b>Belt</b>	Smooth, chevron or cleared rubber belt
<b>Head Pulley</b>	10” head pulley
<b>Tail Pulley</b>	10” self cleaning tail pulley
<b>Take Up</b>	Adjustable Side Mounted bearings with 1 15/16” bore.
<b>Returns</b>	Return rolls with smooth and chevron belts Belly pans with wear resistant glides for cleated belt
<b>Hopper/Sides/</b>	Formed 10 gauge painted steel

The manufacturer reserves the right to change designs  
and specifications without notice.

## **Electrical Control Panel**

**Enclosures** - Enclosures are rated per the environment and are NEMA 4 or better. All enclosures are supplied with an emergency stop.

**Main Disconnect** - The main disconnect is provided with fuses or a circuit breaker and has a “Lockout/Tagout” feature.

**Motor Starters** - The motor starters are IEC rated.

**Branch Circuit Protectors** - The Branch circuit protectors are provided with a circuit breaker and a motor overload as an integral part of the unit.

**Push Buttons** - All push buttons are Heavy Duty dust tight/water tight design.

**Standards** - Built to UL-508 Industrial Standards. Electrical schematics and parts lists are supplied with the unit when the whole system is shipped. Can be CE certified upon request.